

A modern kitchen featuring a glass splashback and a glass-outlet light fixture. The kitchen has dark wood cabinets, a light-colored countertop, and a black range hood. The glass splashback is a light blue-grey color and is illuminated from below by two warm white lights. The glass-outlet light fixture is a series of five white, rectangular, recessed lights mounted on the wall above the splashback. The text "Glass-Outlet" is written in white below the fixture.

Glass-Outlet

# Glass Splashbacks

How to measure guide  
2022

# Handy guide to measure kitchen glass splashbacks



## What you will need



A measuring tape  
Your main tool, a measuring tape!

Try to measure in:  
Milimetres: (mm)  
or  
Centimeters: (cm)



Paper and pen/pencil  
This is to note all your measurements.



Camera / scanner  
To take photos of your area and to upload your sketches to us to provide your costing.

# Step 1: Sketch

Measuring for your splashback area can be tricky due to the complexity of the area, however with this handy guide, it will be easy and you will be uploading your sketch in no time.

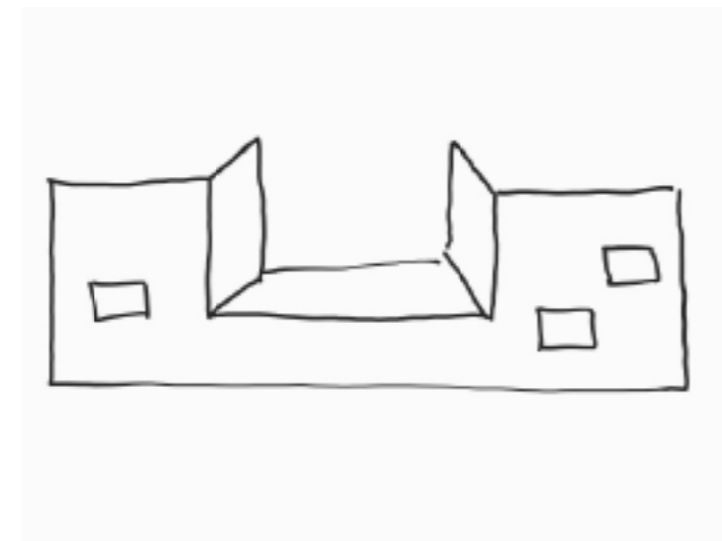
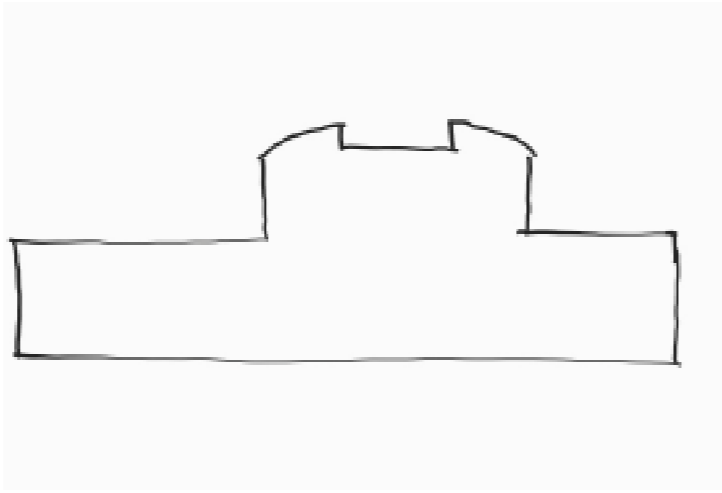
## Take a sketch of the area

Firstly it is useful to make a rough sketch of the areas that require splashbacks. These do not need to be perfectly neat but just right to convey what is required. An example can be seen as below. Sending us a photo or video of the area is also very useful for quoting.

Example photo of the area



Example sketch



# Step 2: Annotate



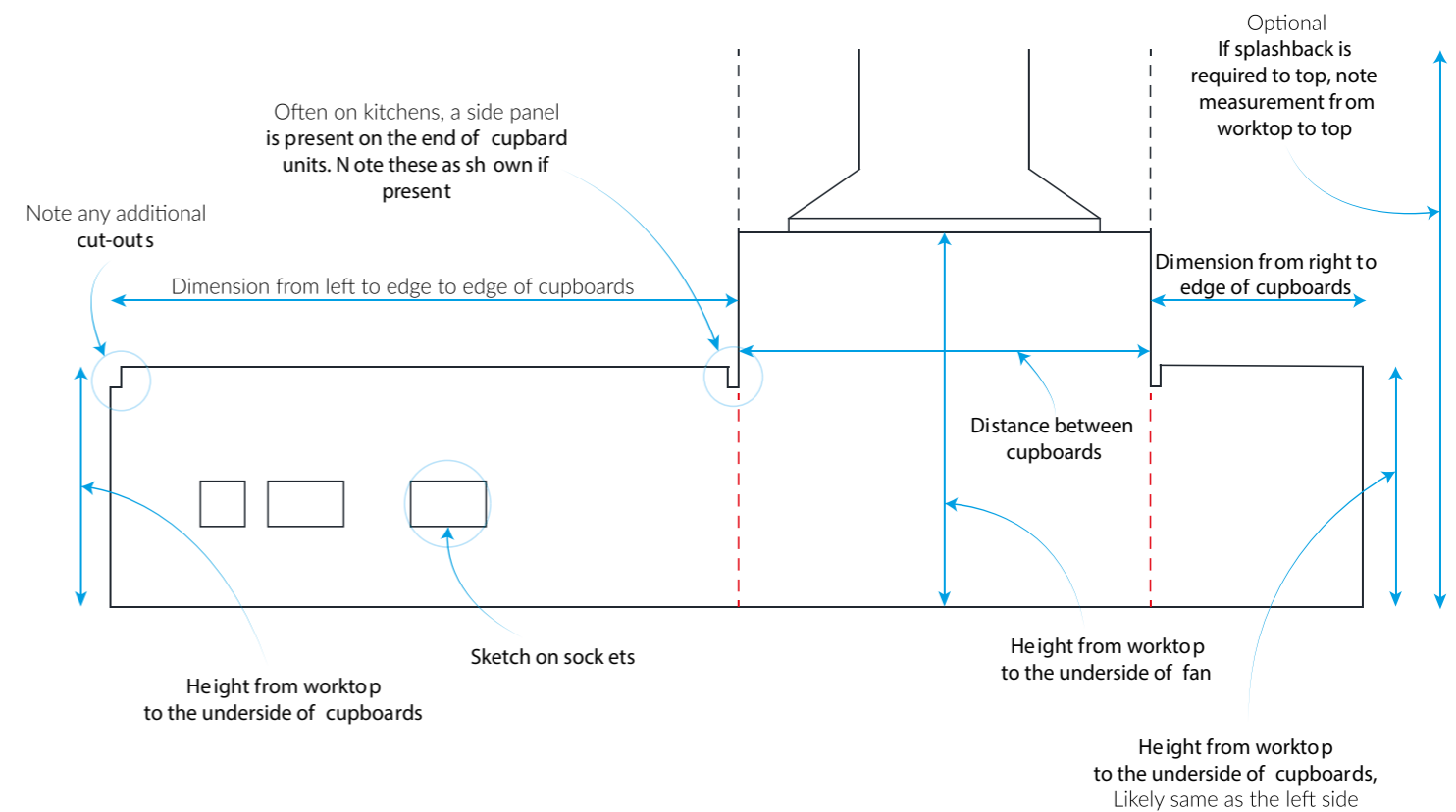
### Useful Tips

- This is not a competition! A quick rough sketch is fine.
- Glass splashbacks can be shaped so sketch the best as you see we will judge.
- Uploading a sketch or video is also very useful with any quotation.

## Annotate your drawing with measurements

Next step is to start annotating the drawing you have made with useful measurements. Below shows a general example of a sketch that has been annotated.

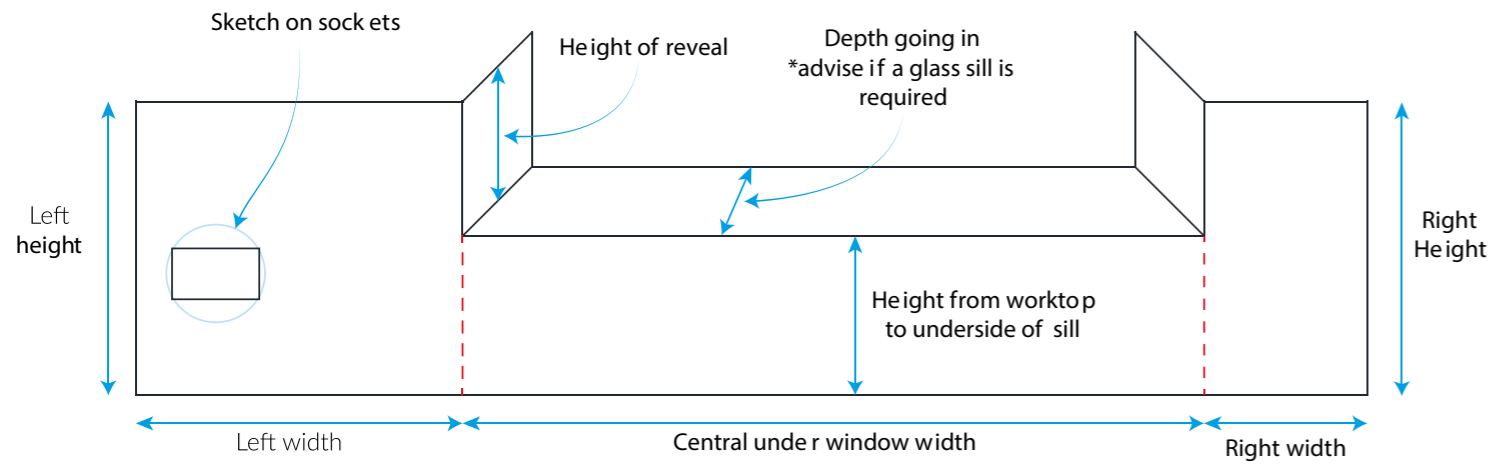
### Typical Inverted T shape area



## Step 2: Continued...

# Step 2: continued...

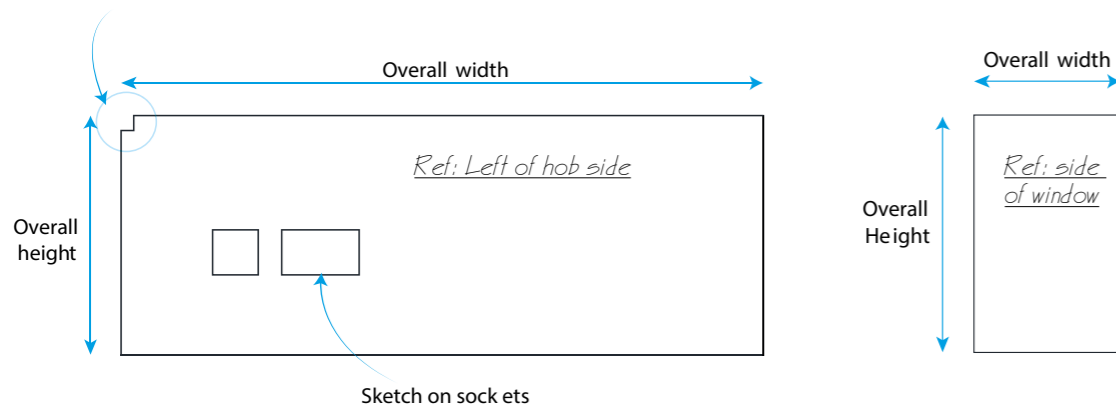
## Typical window area



## Basic areas

Most areas may be fairly straight forward, below are measurements required for these areas

Note any additional cut-outs



## Too complicated so far?

If you are having trouble so far, no worries we are here to help. The best way to get measurements done for you is to arrange a site visit.

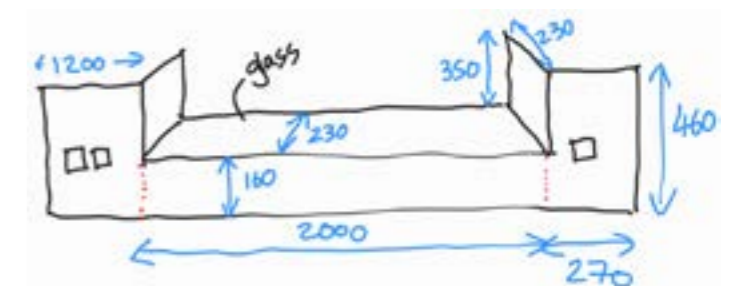
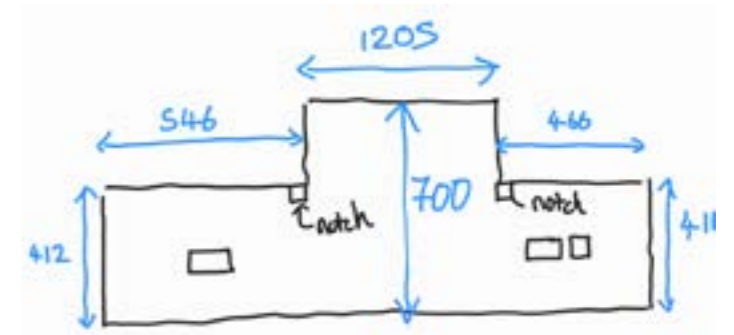
[Click Here](#) and select to arrange a site visit, once a site visit fee has been paid we can arrange a member of the sales team to visit and take the measurements required, we can also bring samples to showcase the finish options and discuss your project..



## Useful Tips

- Perfect accuracy is not required, as best as possible is okay, final measurements will be determined on the site survey.
- No kitchens are quite the same, sketch what you see as best as possible. If any dimensions are required we will advise accordingly.
- Make any notes that we should be aware of if not sure.

## Examples of sketches



## Step 3: Extras

### Advise on any extras that may be needed

Extras include the below items, note down if you require any additional items to for your kitchen

- Chopping boards or workmats (Generally made as 400x300 (mm)).
- Wipe boards (specify a size).
- Table tops (specify size).
- Any other area that you may want cladded in the same finish such as walls or boiler box pipes etc...



Please Note:

Any Extras that require painting will need to be finalised with the splashback order so the same batch of paint can be mixed for best colour match.

## Step 4: upload Sketch

### Step 4: Upload your sketches, sizes and photos



You can either email us on [info@glass-outlet.co.uk](mailto:info@glass-outlet.co.uk) or fill in our quotation request form ([found here](#)) with all your details.

Upload your sketches, photos, plans or details to us along with your intended finishes you would like quoting on.

We will then review your information and get back to you with any queries or provide your quotation.

Generally we try and get back to you the same day however at busy times please allow upto 24hrs for a quote.

---

We hope you have found this handy guide on how to measure splashbacks for kitchens useful

Thank You

Glass Outlet Team



## **Glass Outlet Ltd**

Rear of 214-216  
Alexander Avenue  
Harrow  
HA2 9BU  
**T: 0203 802 4295**

**E: [info@glass-outlet.co.uk](mailto:info@glass-outlet.co.uk)**  
**W: [www.glass-outlet.co.uk](http://www.glass-outlet.co.uk)**